



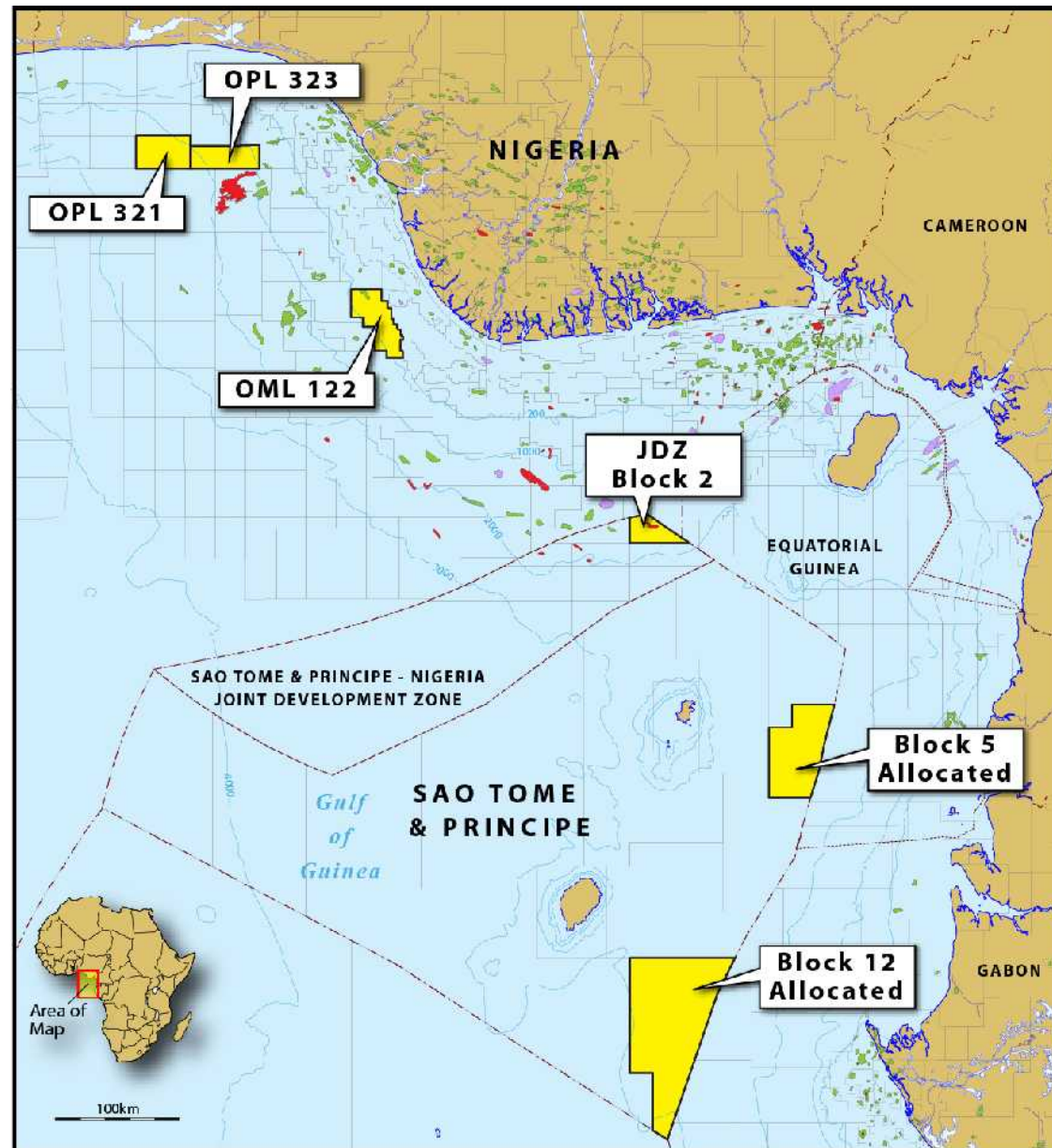
EQUATOR EXPLORATION LIMITED

Exploring West African Waters

Annual General Meeting

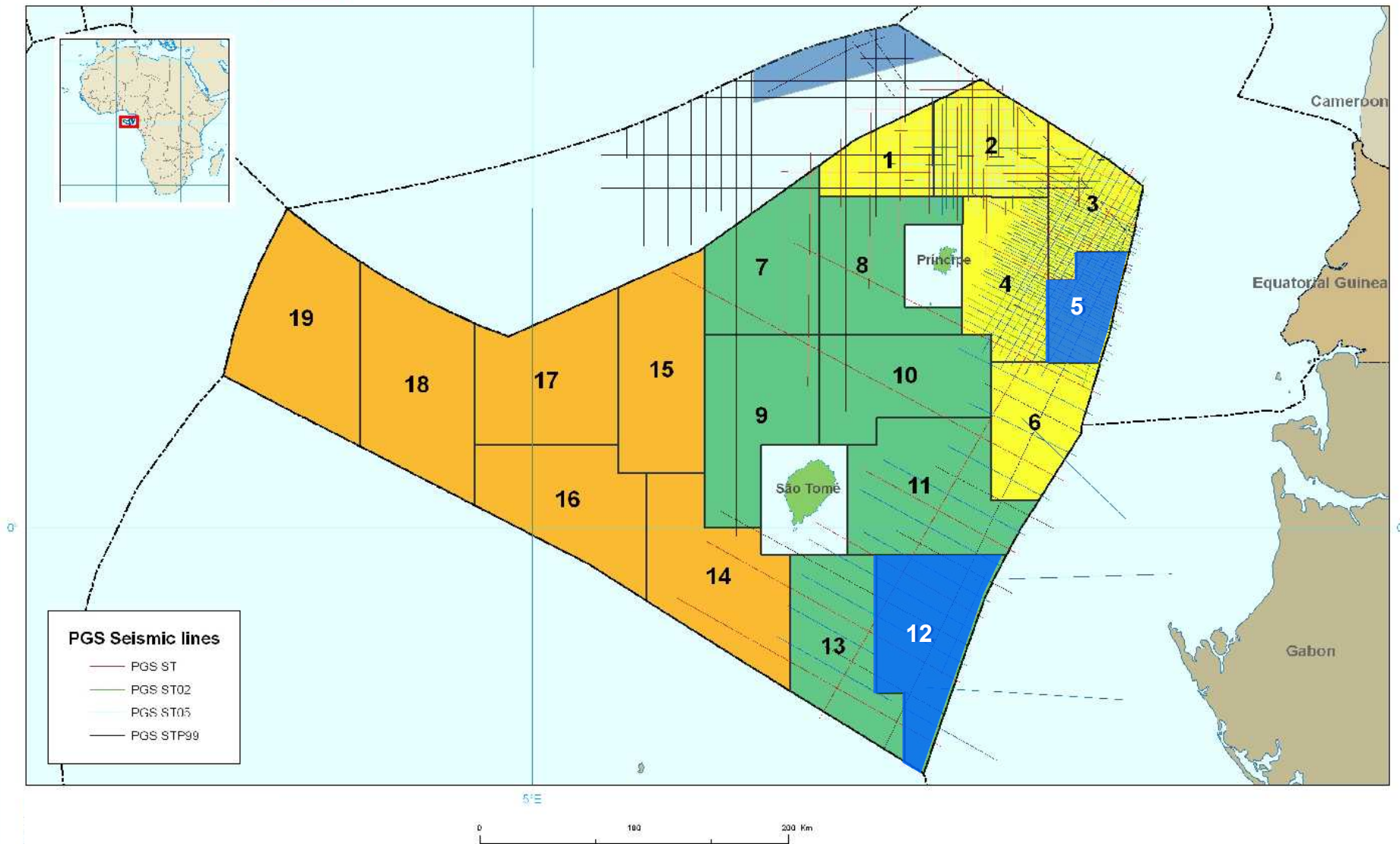
20 May 2011

Equator Interests

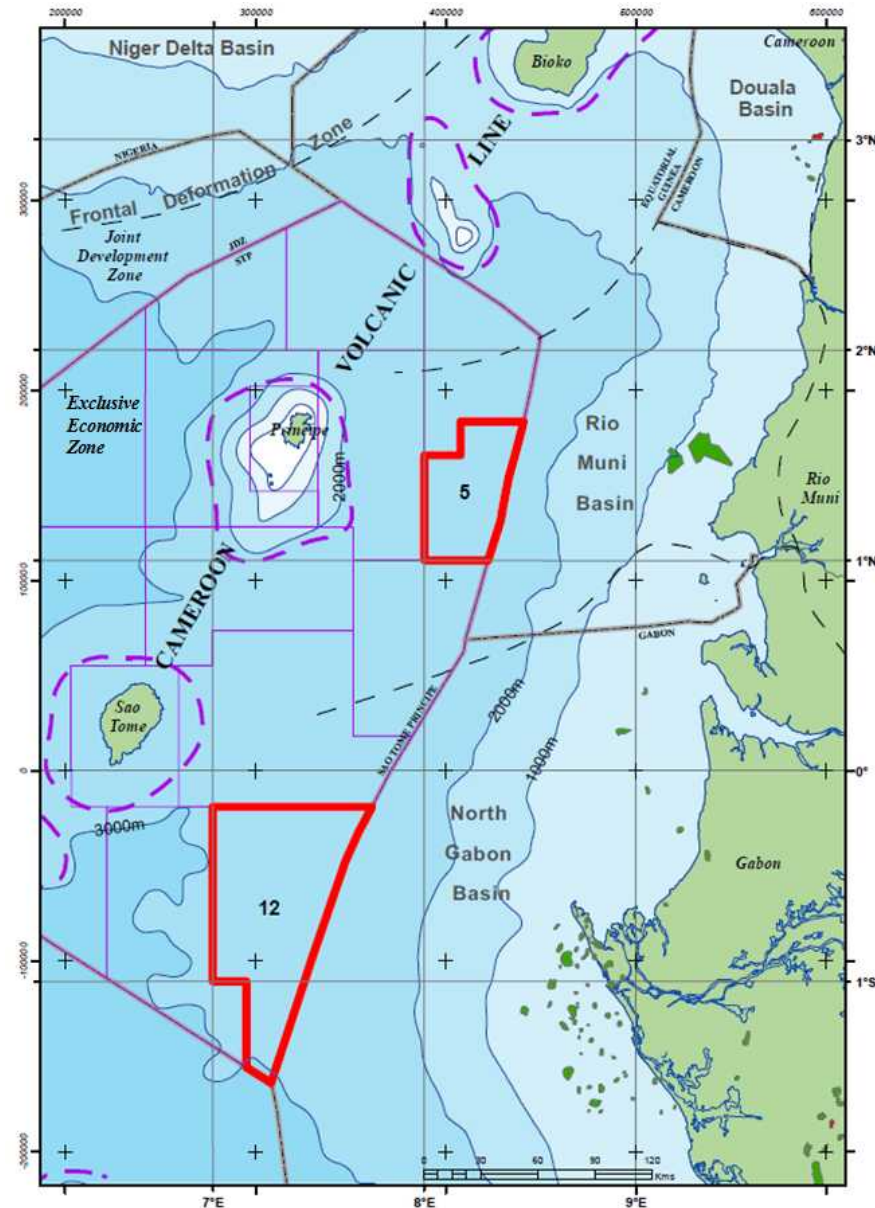


STP BLOCKS 5 & 12

ANP Licence Blocks



Regional Location Map



Seismic Data Licensed by EEL

Block 5

- 1717 km across block

Block 12

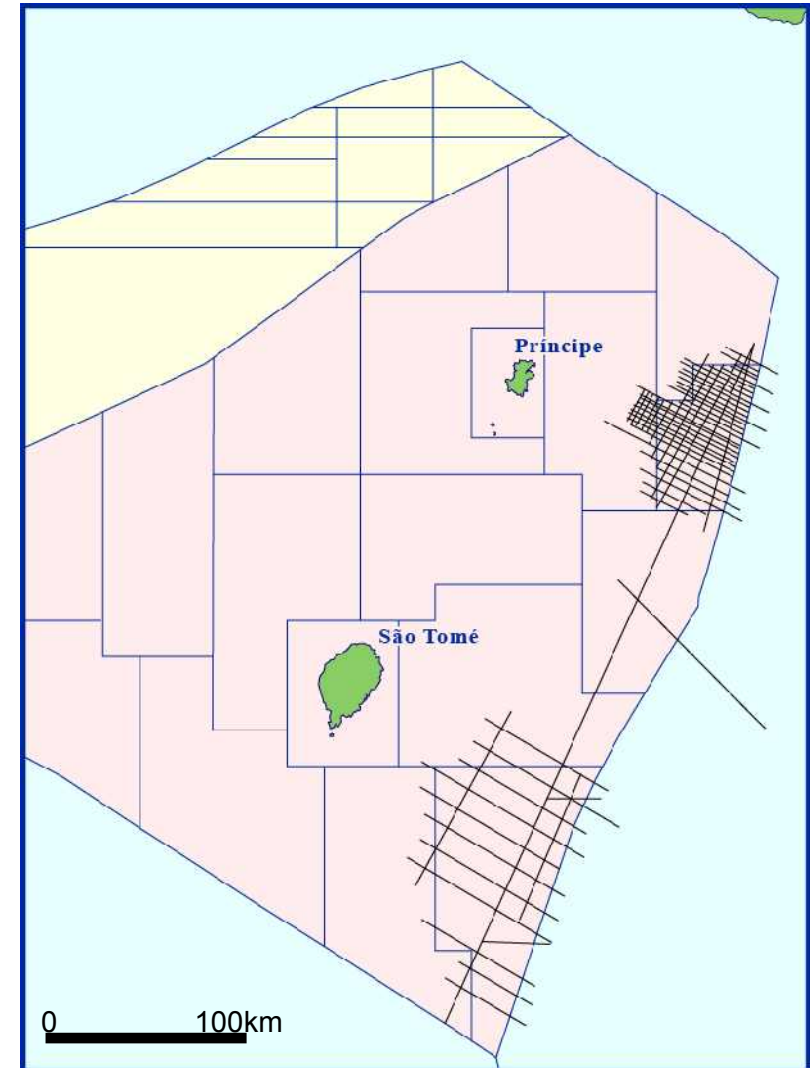
- 989 km across block

Regional Tie Lines

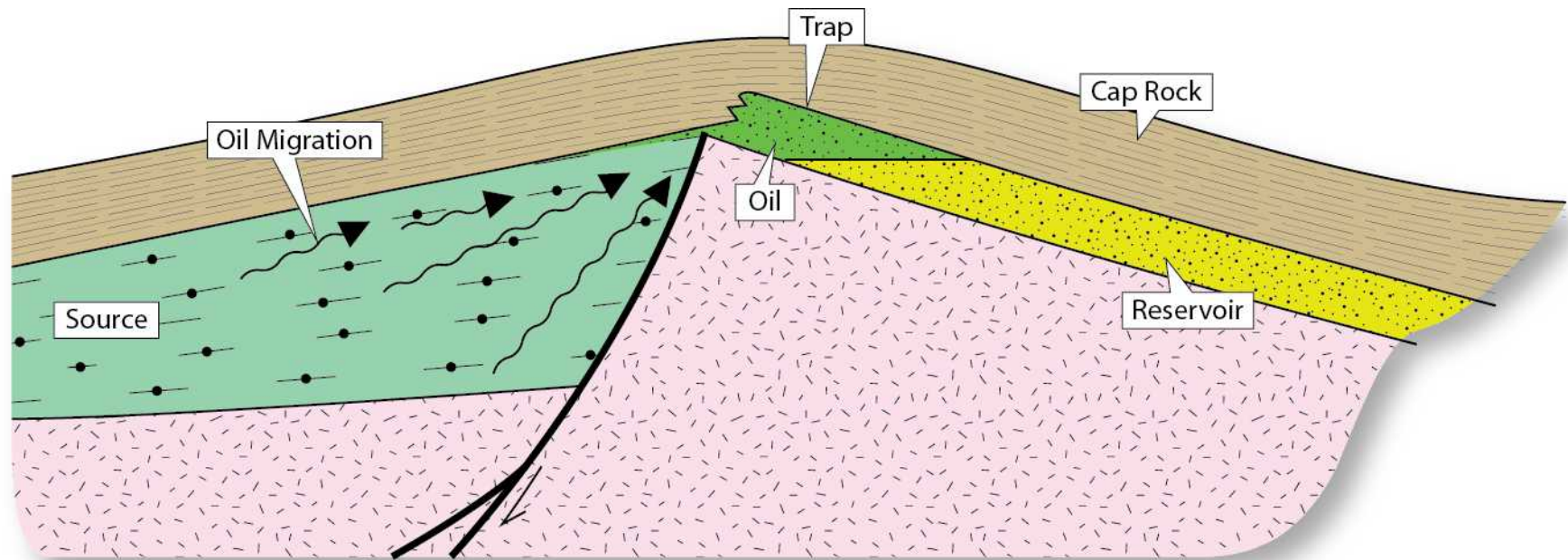
- Total of ca. 225 km : joining blocks 5 & 12 and well tie Ika-Marin-1 (BHP, 2001, TD 3550m, P&A dry) in Gabon Tolu / Mbeli -Marin block.

Grand Total

- Total of some 2930 km of selected seismic data loaded to SMT project.



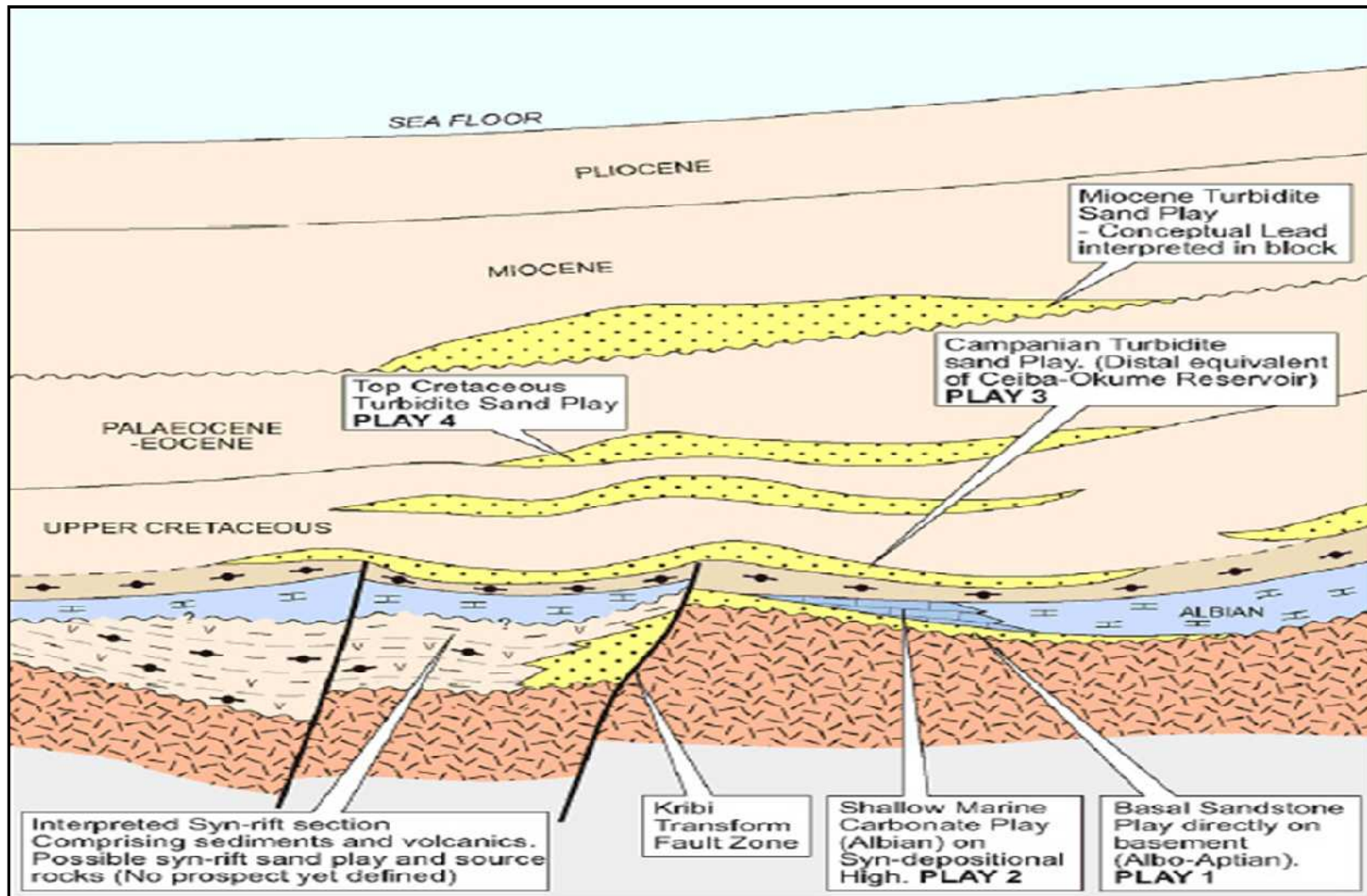
Oil Field Components



RISK COMPONENTS:

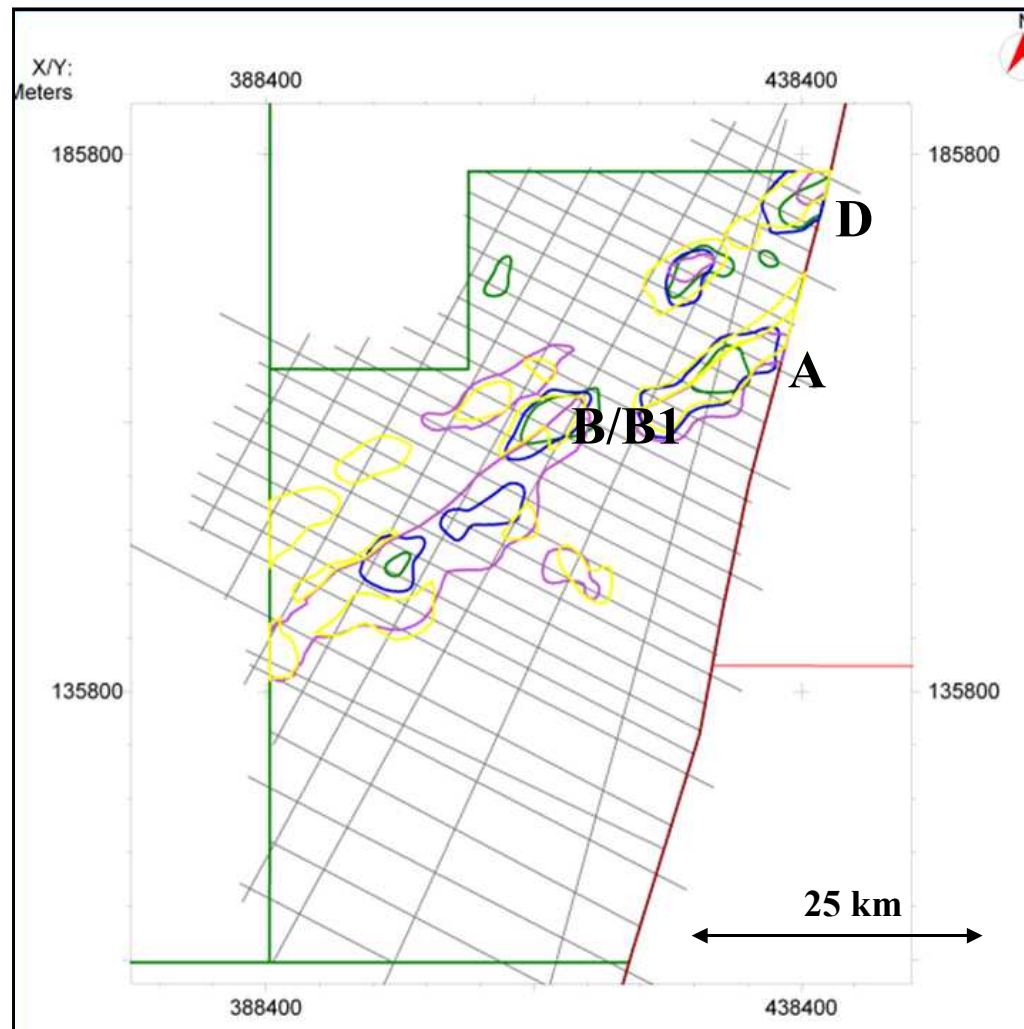
- **TRAP GEOMETRY (4 way dip, tilted fault block)** A%
- **SEAL (Cap rock, Fault)** B%
- **RESERVOIR (Presence, Porosity, Permeability)** C%
- **HYDROCARBON CHARGE (Presence, Maturity, Migration)** D%
- **Overall Chance of Success (COS) = A x B x C x D =** E%

Play Concepts



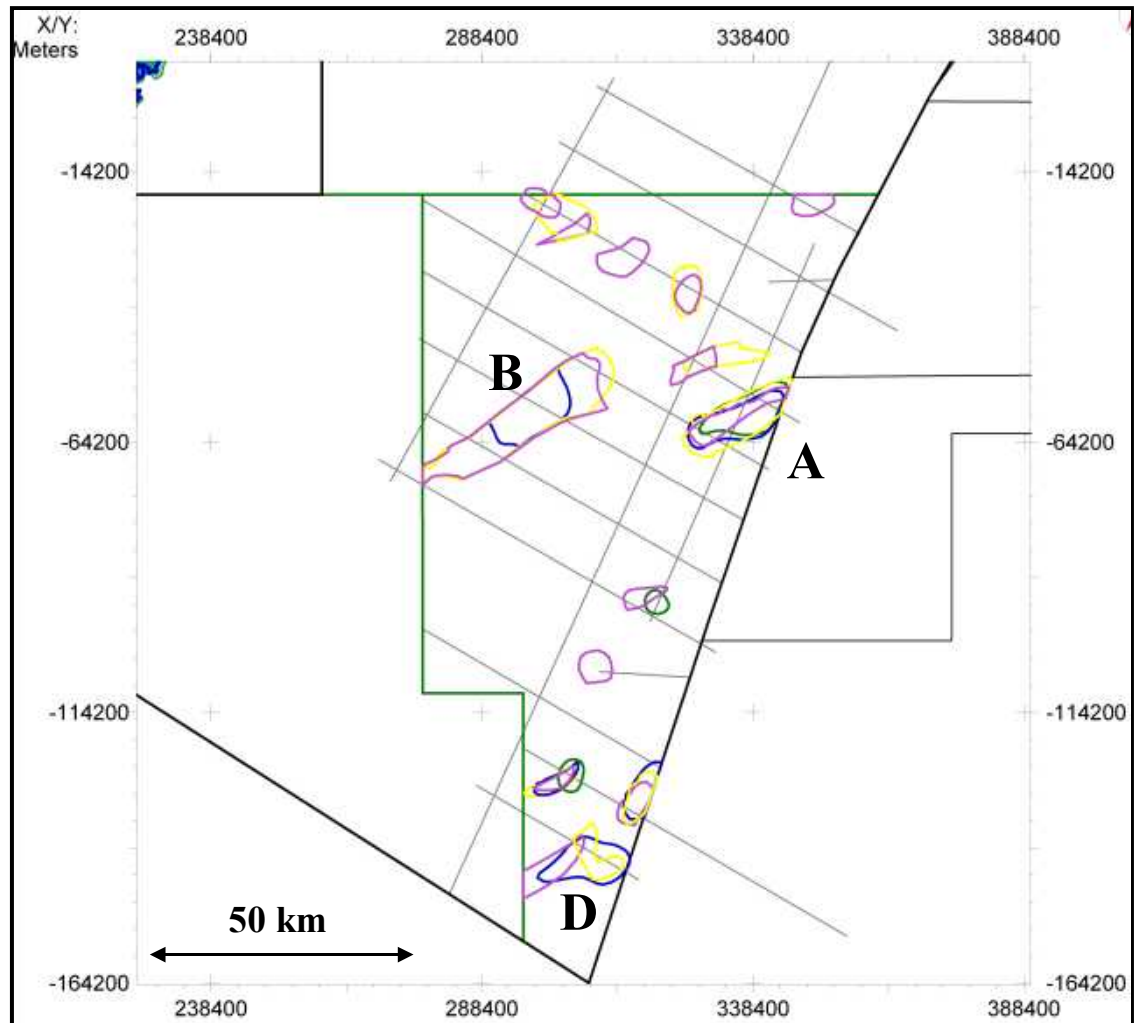
Block 5 - Prospects & Leads

- Top Cretaceous □
- Base Campanian □
- Mid Albian □
- Basement □



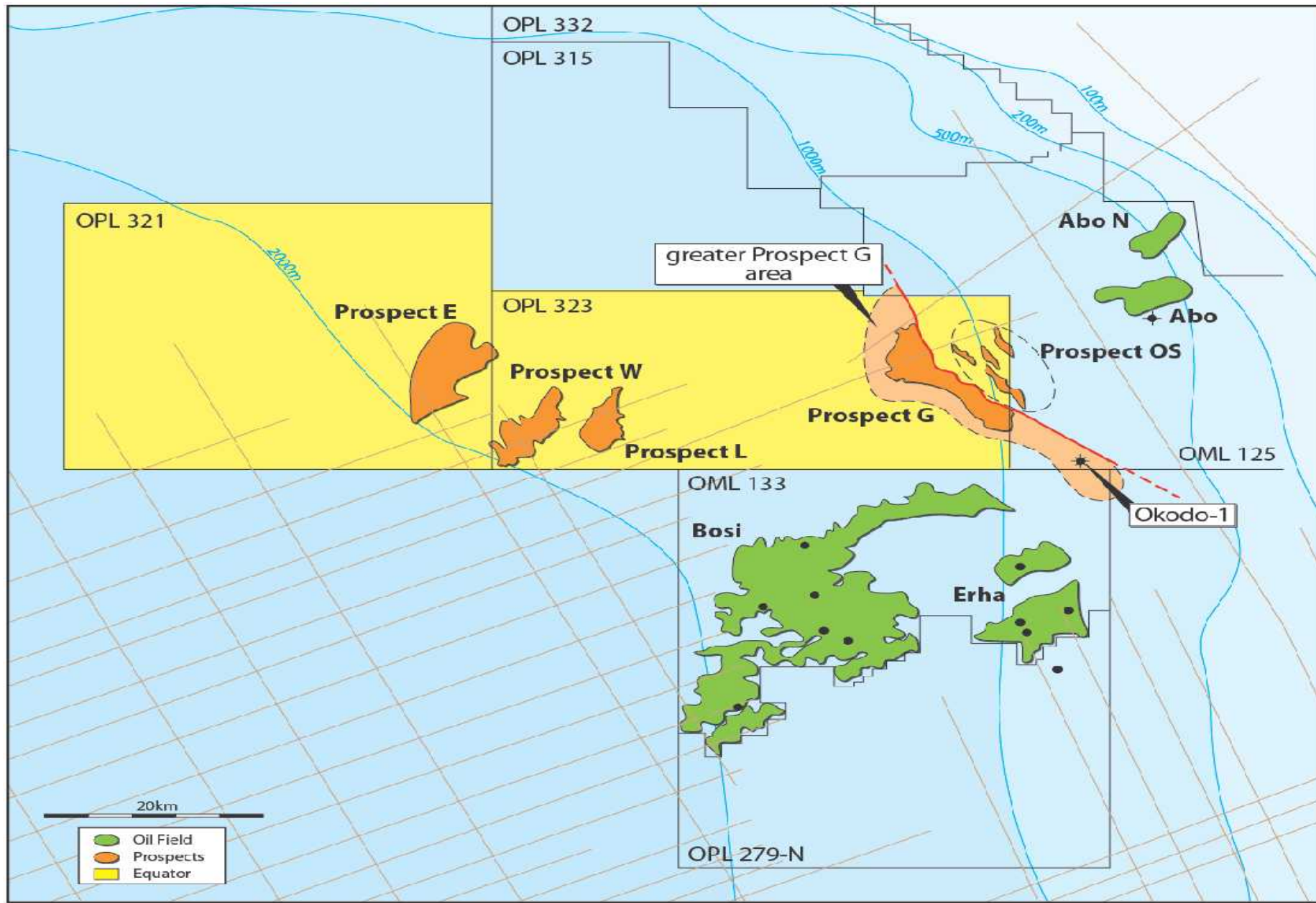
Block 12 - Prospects & Leads

- Top Cretaceous □
- Base Campanian □
- Mid Albian □
- Basement □

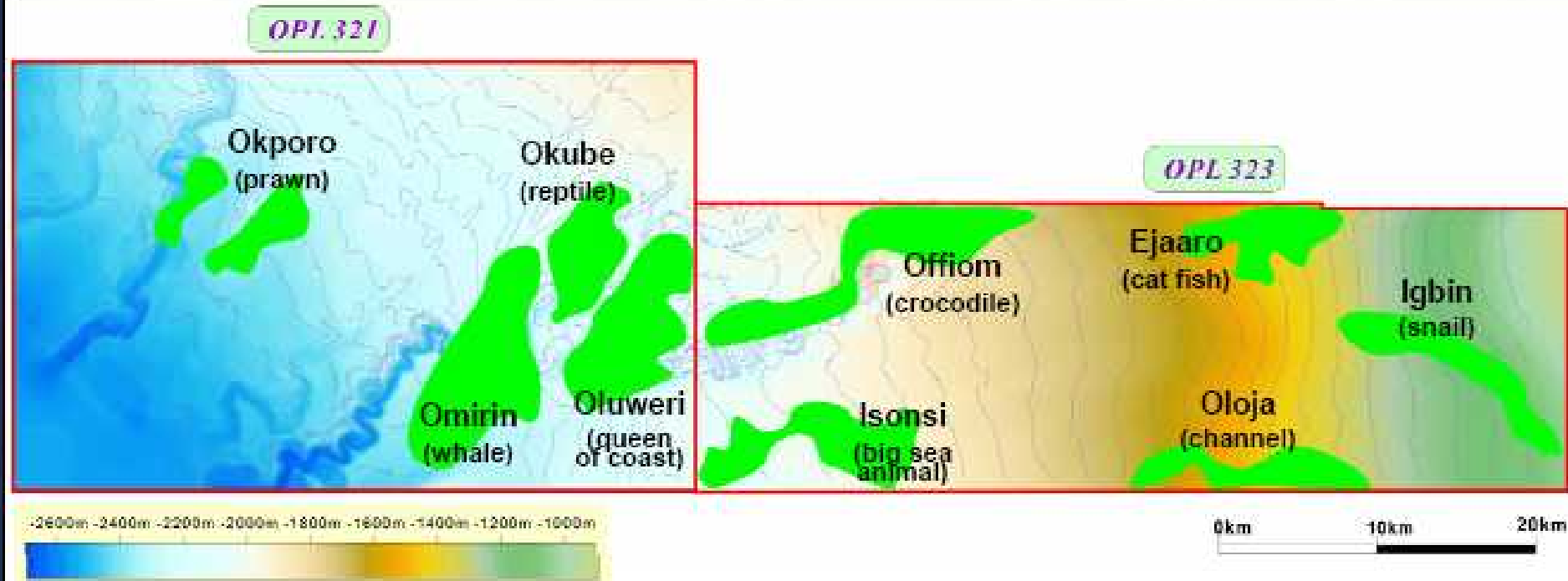


OPL 321 & OPL 323

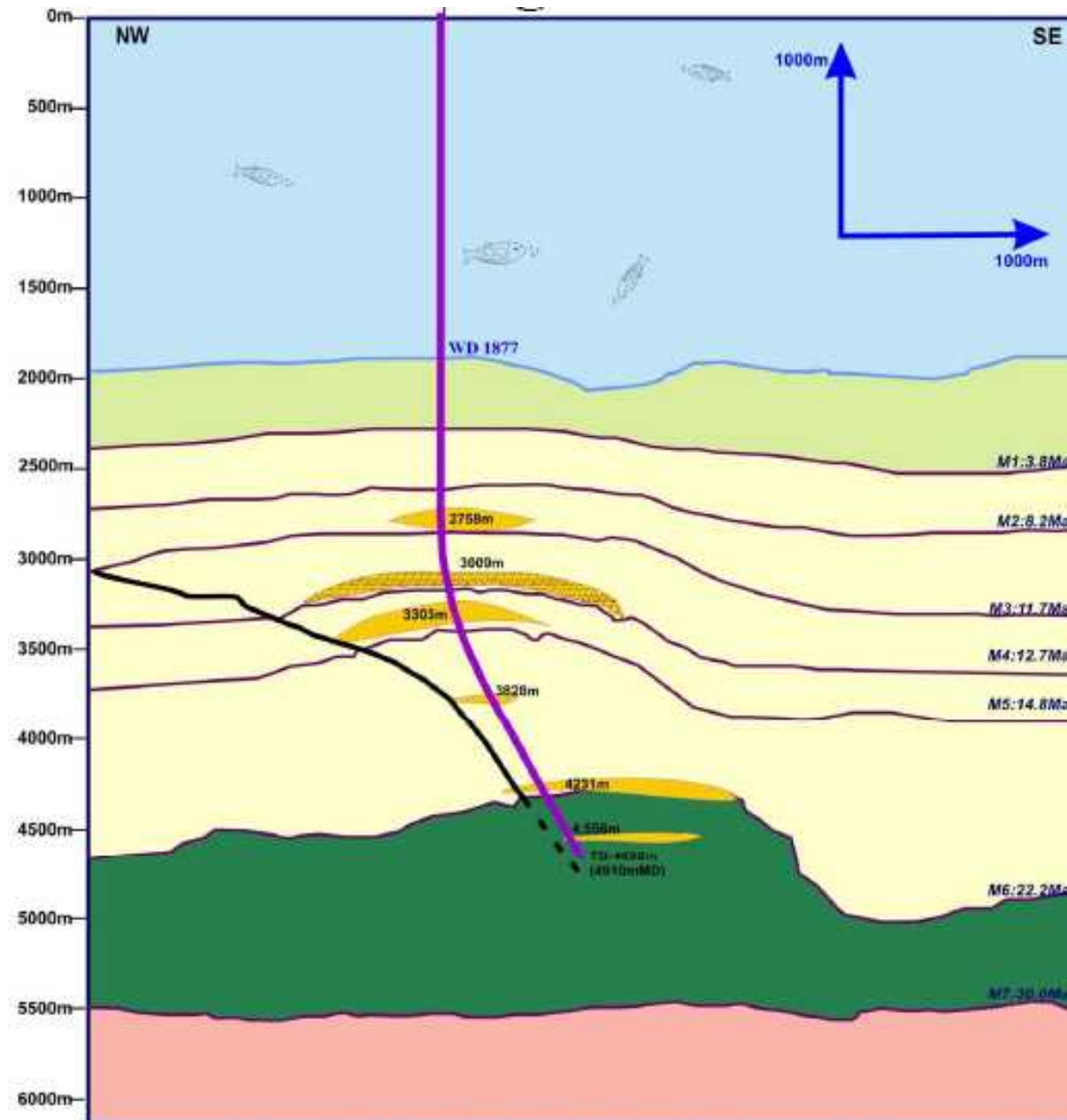
OPL 323 & 321 - Prospects



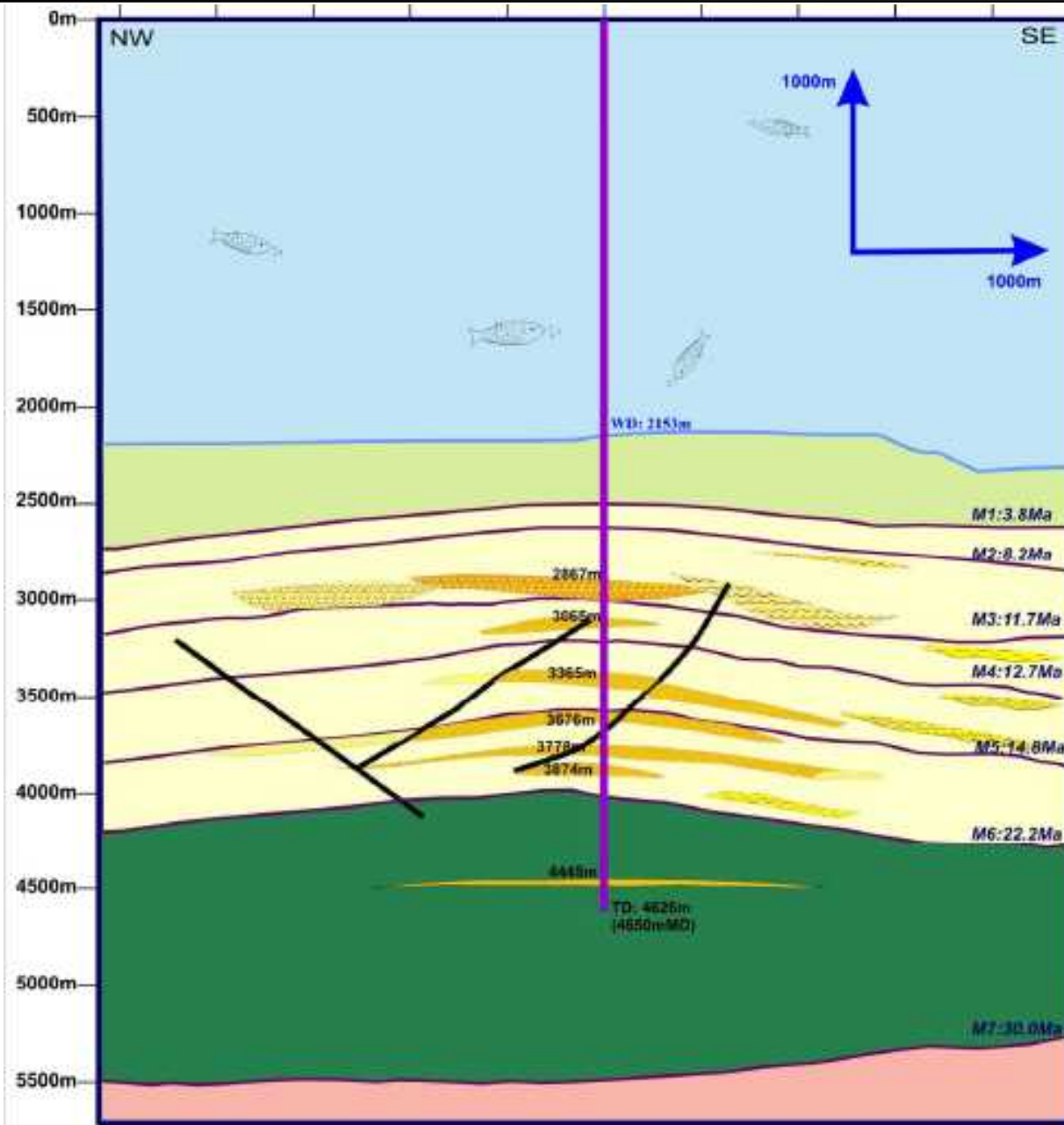
KNOC Prospect Evaluation



OPL 323 – Offiom 1 Well Trajectory

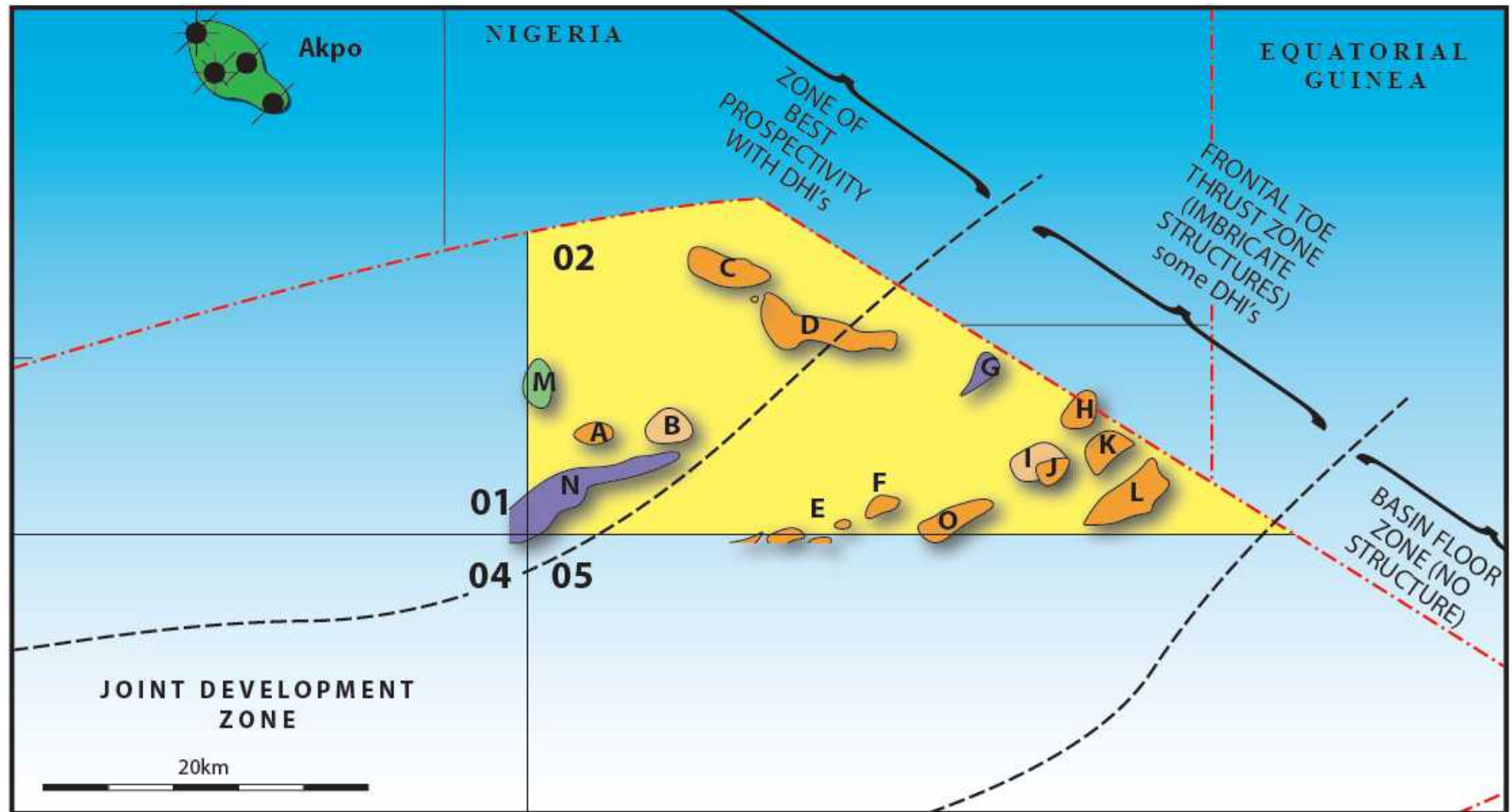


OPL 321 – Omirin 1 Cross Section

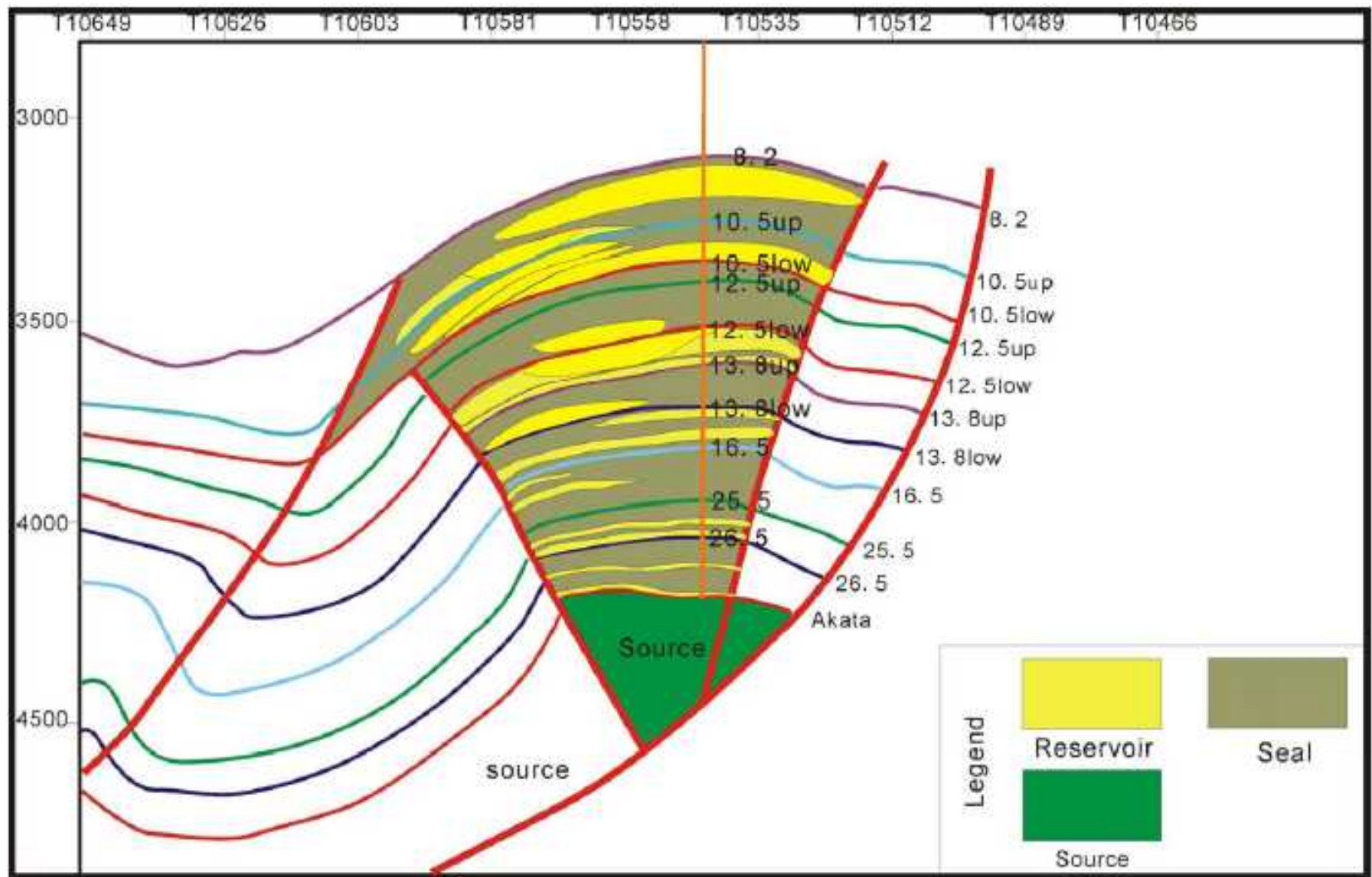


JDZ BLOCK 2

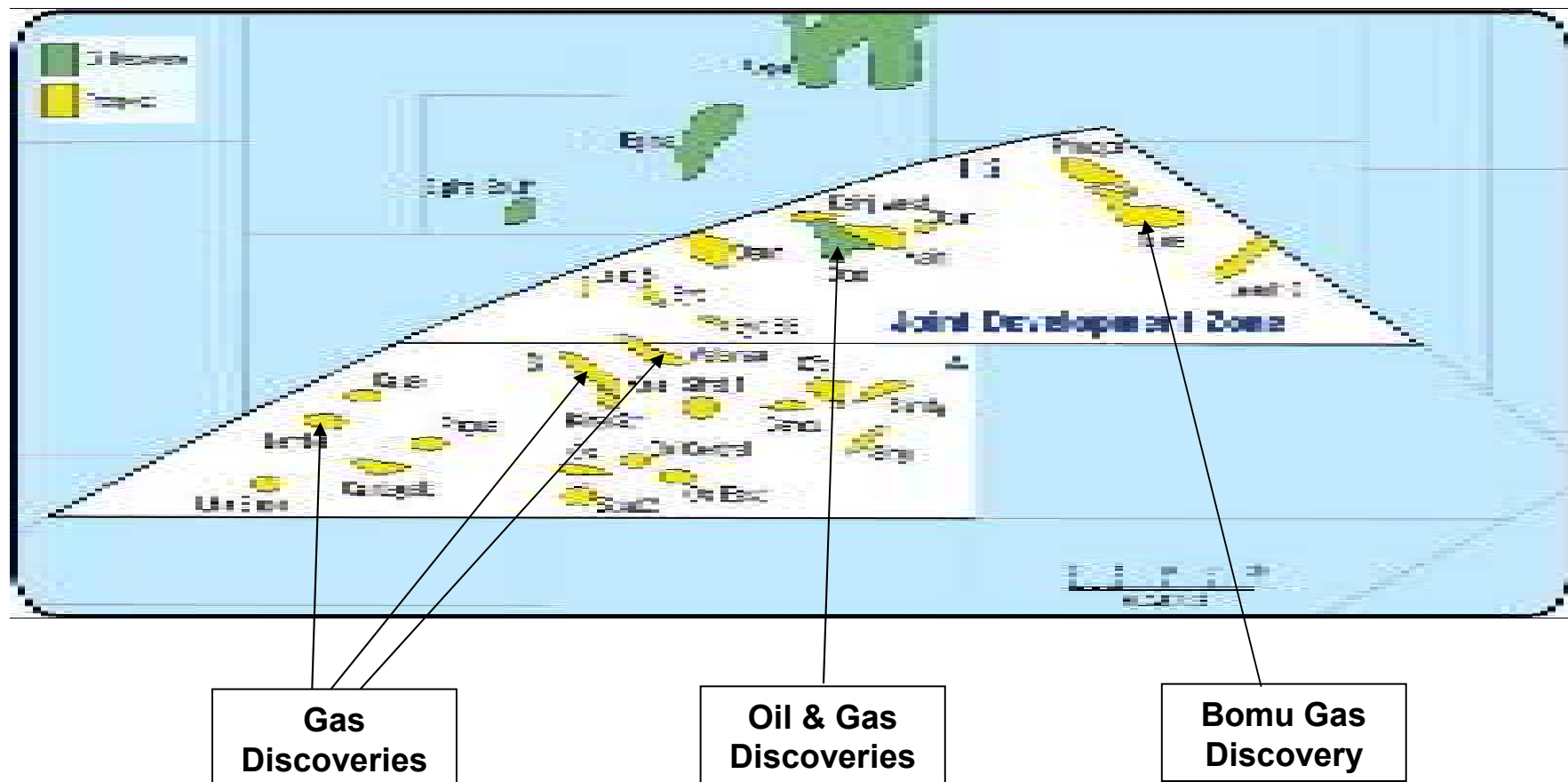
JDZ BLOCK 2 – PGS PROSPECTS



Bomu 1 – Cross Section



Joint Development Zone - Discoveries





EQUATOR EXPLORATION LIMITED

Exploring West African Waters

Annual General Meeting

20 May 2011